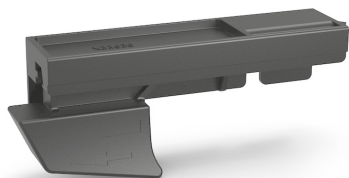


# DRAWER ANTI-OPENING DEVICE



The photo is used only for illustrative and non-exhaustive purpose

| ART.   | EAN          | W [mm] | D [mm] | H [mm] | Net weight [kg] |
|--------|--------------|--------|--------|--------|-----------------|
| 391B06 | 805368552144 | 116    | 29     | 42     | 0,025           |

|            |                     |     |
|------------|---------------------|-----|
| Dimensions | Overall height [mm] | 42  |
|            | Overall width [mm]  | 116 |
|            | Overall depth [mm]  | 29  |

|                |          |     |
|----------------|----------|-----|
| Technical data | Material | ABS |
|----------------|----------|-----|

|            |        |                 |
|------------|--------|-----------------|
| Properties | Colour | Anthracite grey |
|------------|--------|-----------------|

|                                    |                       |         |
|------------------------------------|-----------------------|---------|
| Sales specifications               | Multiple order [NR]   | 1       |
|                                    | Assembly              | Mounted |
|                                    | Packaging type        | PE bag  |
|                                    | Packaging width [mm]  | 116     |
|                                    | Packaging depth [mm]  | 29      |
|                                    | Packaging height [mm] | 42      |
|                                    | Gross weight [kg]     | 0,029   |
|                                    | Plastic weight [kg]   | 0,004   |
| Packaging volume [m <sup>3</sup> ] | 0,0001                |         |

Tolerances: dimensions ±2% | weights ±5%



INNOVATION  
SINCE 1929.



Company certificated ISO 9001

#### FAMIS.r.l.

VIA STAZIONE ROSSANO, 13 – 36027 ROSÀ (VI) ITALY  
TEL +39 0424 585455 – FAX +39 0424 585470  
INFO@FAMISPA.COM  
R.I. DI VICENZA, C.F. & P. IVA IT03498610249  
CAPITALE SOCIALE EURO 100.000,00 INT. VERS.  
CCIAA VI: R.E.A. N° 330190

Soggetta ad attività di direzione e coord. di C.I.M.M. S.p.A.

FAMI EXPORT DEPT.  
TEL +39 0424 585455  
FAX +39 0424 585472  
EXPORT@FAMISPA.COM

[WWW.FAMISPA.COM](http://WWW.FAMISPA.COM)

STOREVAN  
TEL +39 0424 585455  
FAX +39 0424 585482  
INFO@STOREVAN.IT

[WWW.STOREVAN.COM](http://WWW.STOREVAN.COM)